

Pierlapin

Ukulele

Simon Rogiest

Ukulele sheet music for "Pierlapin" by Simon Rogiest. The score is in 4/4 time and features a mix of chords and melodic lines. Chords include Fm, Ab7, Cm, Bb, Db7, Eb7, Fm, Ddim, and G. The music includes dynamic markings like *p*, *mp*, and *f*, and articulation like accents and slurs. Measure numbers 6, 11, 16, 21, and 25 are indicated.

Chord diagrams shown above the staff:

- F m
- Ab7 4fr.
- C m 3fr.
- Bb
- F m
- Ab7 4fr.
- Db7
- Eb7
- F m
- F m
- Ab7 4fr.
- Db7
- Eb7
- C m 3fr.
- Bb
- F m
- Ab7 4fr.
- Db7
- Eb7
- F m
- F m
- F m
- f Eb
- F m
- D dim
- F m
- Eb
- F m
- C m7 3fr.
- F m
- f Eb
- F m
- D dim
- F m
- Eb
- F m
- D dim
- D dim
- D dim
- G

2 G F m E^b F m D dim F m E^b

29

F m D dim D dim G

33

G F m F m E dim^{2fr.} F m

37

F m F m E dim^{2fr.} F m *mp* E dim^{2fr.} F m F m E dim^{2fr.}

42

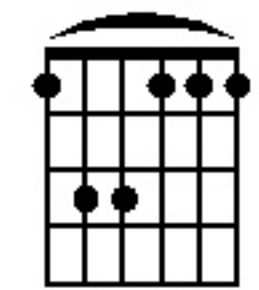
F m E dim^{2fr.} F m F m F m F m F m

47

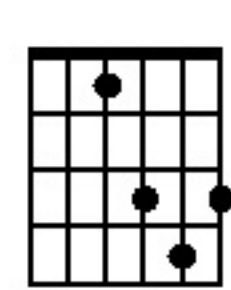
D dim D dim G G

52

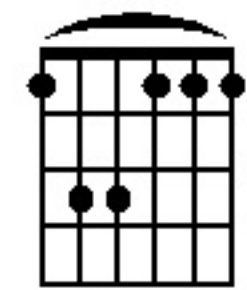
F m



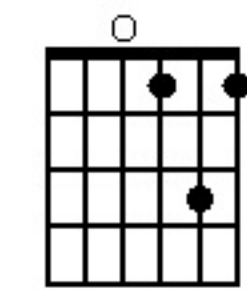
E \flat



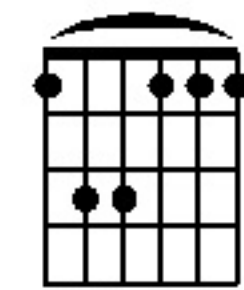
F m



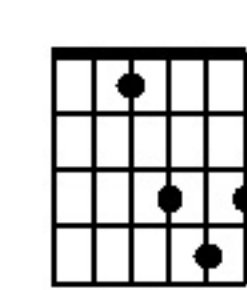
D dim



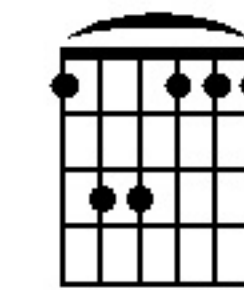
F m



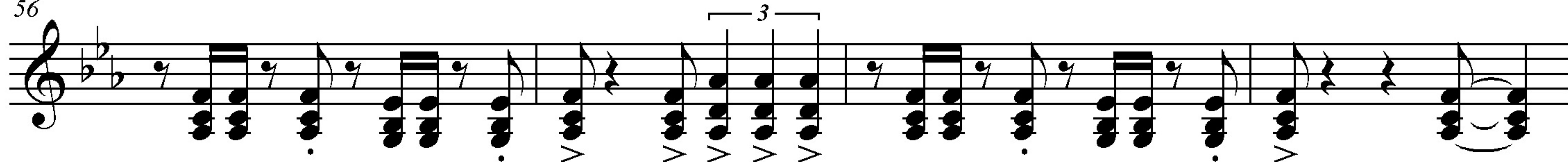
E \flat



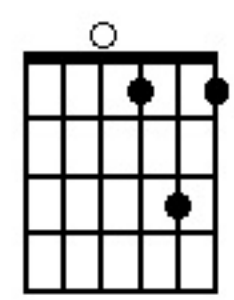
F m



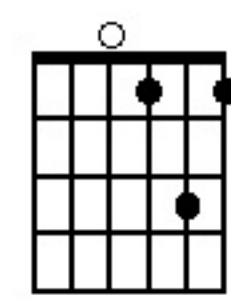
56



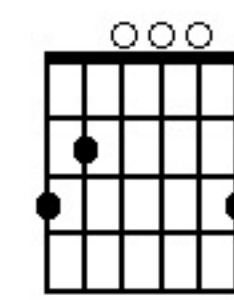
D dim



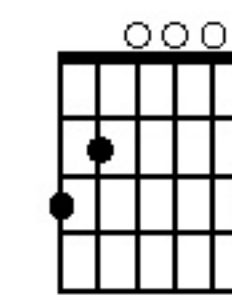
D dim



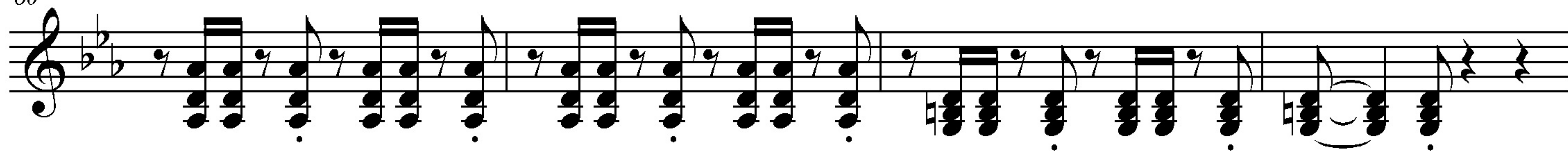
G



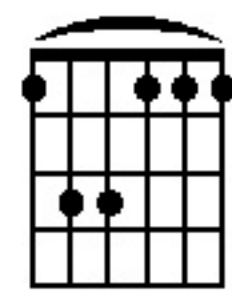
G



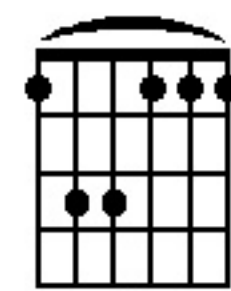
60



F m



F m



64

